



Alfredton School's Newsletter is proudly supported by ...

BISSET HONDA

HONDA

KEEPING YOU GOING

116 Main Street, Pahiatua (06) 376 8829

Meldrum Romney
John & Carol Wingate



1930 Castlehill Road
RD3
Eketahuna 4996
Phone 06 3750602

Email: jandcwingate@xtra.co.nz



Rob & Lucy Thorneycroft
06 3725701 or 0275381842

TAPIRI
— ANGUS —

415A Bluff Rangitumu Rd
Masterton

TARARUA SHEARING LTD



For all Your Shearing
Requirements

Phone Lionel

PHONE 06 375 8488

WATER TANK SERVICES

TOMLIN WATER TANK SERVICES

- Concrete & Plastic Water Tank Cleaning
- Concrete Tanks Repairs
- Chemical Free
- Professional & Efficient Service offering Competitive Rates
- Formerly known as Mobi-Kair

IAN 021 120 1290 | JODI 06 377 2258

braddick1@xtra.co.nz | Like us on 

Thank you for your continued support.

Inspiring learning for a lifetime ~ Little acorns to mighty oaks

Kia ora,

Last Friday many of our Year 5 to 8's took part in the Tararua Sevens Tournament in Pahiatua. Each child chose their sport and were part of rural schools combined teams (Alfredton, Ballance, Makuri and Mangatainoka Schools). Thank you to the parents who managed a couple of the teams: Alex Foreman, Brian Mitchell and James McKay. All of the children did well; I have had emails from other team managers saying what a fantastic bunch of kids they all were and what a pleasure it was to manage them. The Y5/6 hockey team placed first and should be very proud of their achievement.

Next Tuesday afternoon (15th) we will be tree planting in the Native Garden. All children will need to wear clothes suitable for spending time in the garden and will need to bring (not wear) gumboots to school. Those children travelling home by bus won't be able to wear muddy gumboots in the bus. All families are very welcome to join us. Planting will start at 2pm.

On Wednesday 16th the children will be home with you as teachers are heading to Palmerston North for a day of workshops and learning with Dr Melanie Riwai Couch. The workshops will enable us to better implement national actions competencies, and expectations; address the priority of cultural capability; build knowledge and practice around honouring Te Tiriti o Waitangi, whānau-school partnerships, te re Māori me ona tikanga, racism in school settings, and ākonga kanorau ā-roro and equity. Several of these areas were a priority for some school families in our recent survey.

I have arranged for all of our Year 8's to go to Pukaha, Mt Bruce on 22nd and 29th August to attend science and art workshops. A letter will be coming home this week. This will also be an opportunity for them to work with other Y7 and 8's from neighbouring schools. I will need one or two parents to go with the children so if you are a Year 8 parent please let me know if you are able to go as soon as possible.

The heat pump in Huia room has come to the end of its life. We have placed heaters in the room and the children are plenty warm enough. The heat pump is due to be replaced as part of our 10 year property plan so I have been in contact with the property manager to request early release of the funds so that it can be replaced as soon as possible. In the meantime, if we have a particularly cold morning you may want to send them to school in long trousers and with a warm jersey.

Have a great week.

Nga mihi nui
Alison

Dates for your Diary

15th August Tree Planting Afternoon in the Native Garden

16th August Teacher Only Day - Staff in Palmerston North at a training workshop led by Dr Melanie Riwai Couch

18th August Bush Volleyball (Year 6-8)

22nd and 29th August Year 8 at Pukaha Mt Bruce Art and Science workshop

29th August School Speeches Year 1 - 5

30th August School Speech Competition Year 6 - 8

6th September Pahiatua Lions Speech Competition

19th September Whole school Marae visit

21st September Year 8 Formal Dance

10th October Year 5-6 Epro 8 Tournament

11th October School Photographs

3rd November Pets Day

9th November Bush Ag Day

23rd November Y8 Moving Forward Conference at Tararua College

24th November Rural Schools Athletics

1st December Bush Athletics

5th December Riversdale Beach Life Saving (Whole School)

Term Dates

Term Three: 17th July to 22nd September

Term Four: 9th October to 15th December

Technology Dates (Year 8)

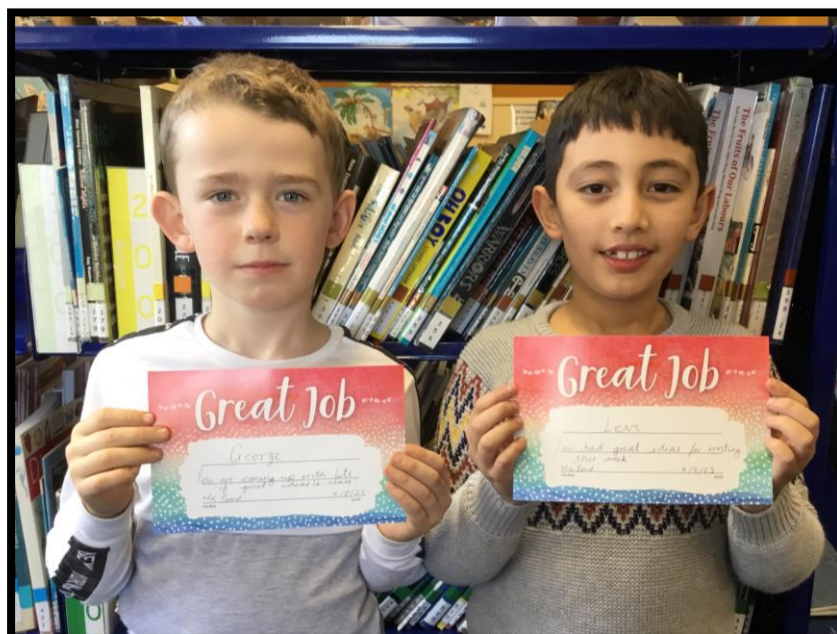
17th, 31st August, 14th September

Please make sure that covered footwear (not gumboots) is worn and long hair is tied back.

Bush Primary Tech has its own Facebook page where you will find more information about what the children are learning and see their successes.

<https://www.facebook.com/profile.php?id=100069563117443>

Classroom Awards



Readers of the Week



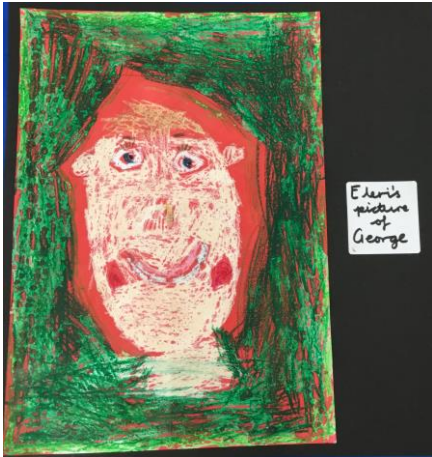
Tararua Sevens Tournament 2023 - a few of our photos



If anyone has photos which they are able to share can you please email them to me.

FROM TUI CLASSROOM

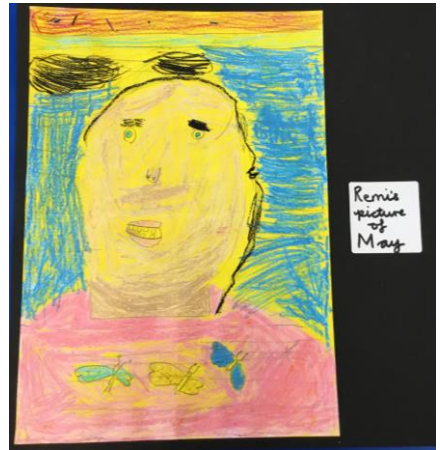
Tui Class have created wax resist portraits of each other



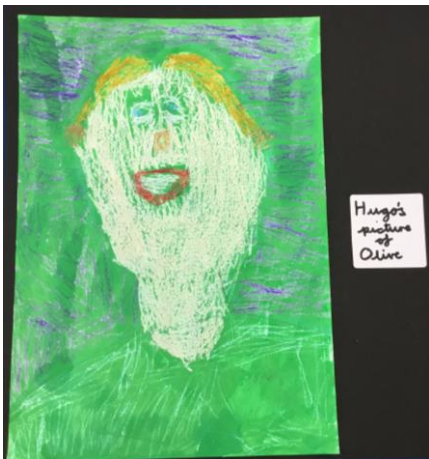
Eleri's picture of George



Olive's picture of Hugo



Remi's picture of May



Hugo's picture of Olive



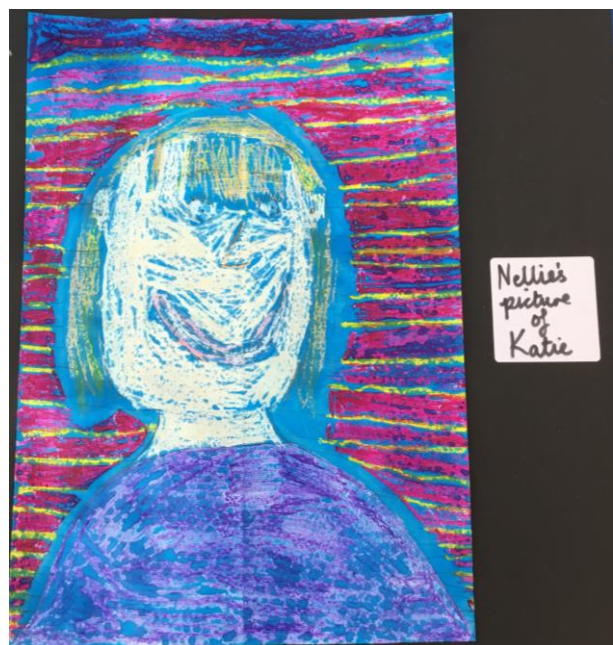
James' picture of Levi



May's picture of Remi



Mason's picture of Leada



Nellie's picture of Katie



BOT UPDATE

NEXT MEETING DATE: Tuesday 13th September at 6:00pm

COMMUNITY NEWS



Sunday Sept 10th
Victoria Esplanade
Palmerston North
Enter Online Only
www.ibike4kids.co.nz

A fun event for kids who love being out on their bikes



SOLWAY
COLLEGE

COMAG
WAIRARAPA



**Solway College and COMAG Wairarapa
proudly presents**

COMAG Wairarapa Solway College
Dressage Inter-Schools Event 2023

Wednesday 20th September 2023

Solway A & P Showgrounds, Fleet Street, Masterton

Entries: Team and Individual

Entry Fees: \$55 (includes entry for 2 tests, A & P Ground Levy,
uncovered day yard)

Covered yarding and overnight camping available at
additional costs

Entry information: All entries online at www.main-events.com

Entries open: Wednesday, 16th August 2023

Entries close: Monday, 13th September 2023



PLANTING AVO

ALL WELCOME!

Tuesday 15th August 2pm

At the Native Garden

Families will have a chance to plant and label their donated trees.

The school children will help us plant approx 200 carex grasses.

Afternoon tea will be served after 3pm for all family helpers!

Please bring a shovel and a wheelbarrow / bucket to move a bit of bark mulch.



A HUGE Thank you to Advance Landscapes who are generously donating wool mulch mats!