



Alfredton School's Newsletter is proudly supported by ...

BISSET HONDA

HONDA

KEEPING YOU GOING

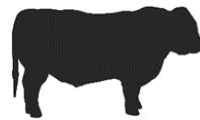
116 Main Street, Pahiatua (06) 376 8829

Meldrum Romney
John & Carol Wingate



1930 Castlehill Road
RD3
Eketahuna 4996
Phone 06 3750602

Email: jandcwingate@xtra.co.nz



Rob & Lucy Thorneycroft
06 3725701 or 0275381842

TAPIRI
— ANGUS —

415A Bluff Rangitumau Rd
Masterton

TARARUA SHEARING LTD



For all Your Shearing
Requirements

Phone Lionel

PHONE 06 375 8488

WATER TANK SERVICES

TOMLIN WATER TANK SERVICES

- Concrete & Plastic Water Tank Cleaning
- Concrete Tanks Repairs
- Chemical Free
- Professional & Efficient Service offering Competitive Rates
- Formerly known as Mobi-Kair

IAN 021 120 1290 | JODI 06 377 2258

braddick1@xtra.co.nz | Like us on

Thank you for your continued support.

Inspiring learning for a lifetime ~ Little acorns to mighty oaks

Kia ora,

Congratulations to Zephyr Moody who won our Senior Speech Contest. He will be representing Alfredton at the Bush Speechmaker Contest tonight in Pahiatua. His speech topic is myths and superstitions. It was a very difficult contest to judge as so many of the speeches were amazing.

This week we have Ella Sidey from Christchurch visiting school. The children have all enjoyed their first day with Ella. Ask them about some of the mindfulness breathing techniques they have learned already.

Calendar art order forms have been sent home with the children. Orders are due in by September 12th.

On September 19th the whole school will be spending the day at the Pahiatua Marae. Letters will come home early next week. We hope that as many of you as possible will be able to join us. We will meet at the Marae in Pahiatua at 9.25 for a 9.30 Powhiri. The children should all wear their school uniform. All the girls will need to bring a pair of old socks. We also need 3 or 4 old pillows so that they can stuff their socks to make poi. If anyone has any wool / yarn which you don't need please can you send it to school by next Wednesday as we would like to braid it for their poi.

Thank you to the parents who phone or email school when their child is going to be absent. Please can you remember to tell us why your child is absent e.g. sick as we have to enter a reason in our roll.

We have begun practising for our school production Pirates vs Mermaids. Performance afternoon will be Thursday October 26th. Please put this date in your diary.

Have a great week.

Nga mihi nui
Alison

Dates for your Diary

6th September Pahiatua Lions Speech Competition

19th September Whole school Marae visit

21st September Year 8 Formal Dance

10th October Year 5-6 Epro 8 Tournament

11th October School Photographs

3rd November Pets Day

9th November Bush Ag Day

23rd November Y8 Moving Forward Conference at Tararua College

24th November Rural Schools Athletics

1st December Bush Athletics

5th December Riversdale Beach Life Saving (Whole School)

Term Dates

Term Three: 17th July to 22nd September

Term Four: 9th October to 15th December

Technology Dates (Year 8)

14th September

Please make sure that covered footwear (not gumboots) is worn and long hair is tied back. Bush Primary Tech has its own Facebook page where you will find more information about what the children are learning and see their successes.

<https://www.facebook.com/profile.php?id=100069563117443>

Principal Awards

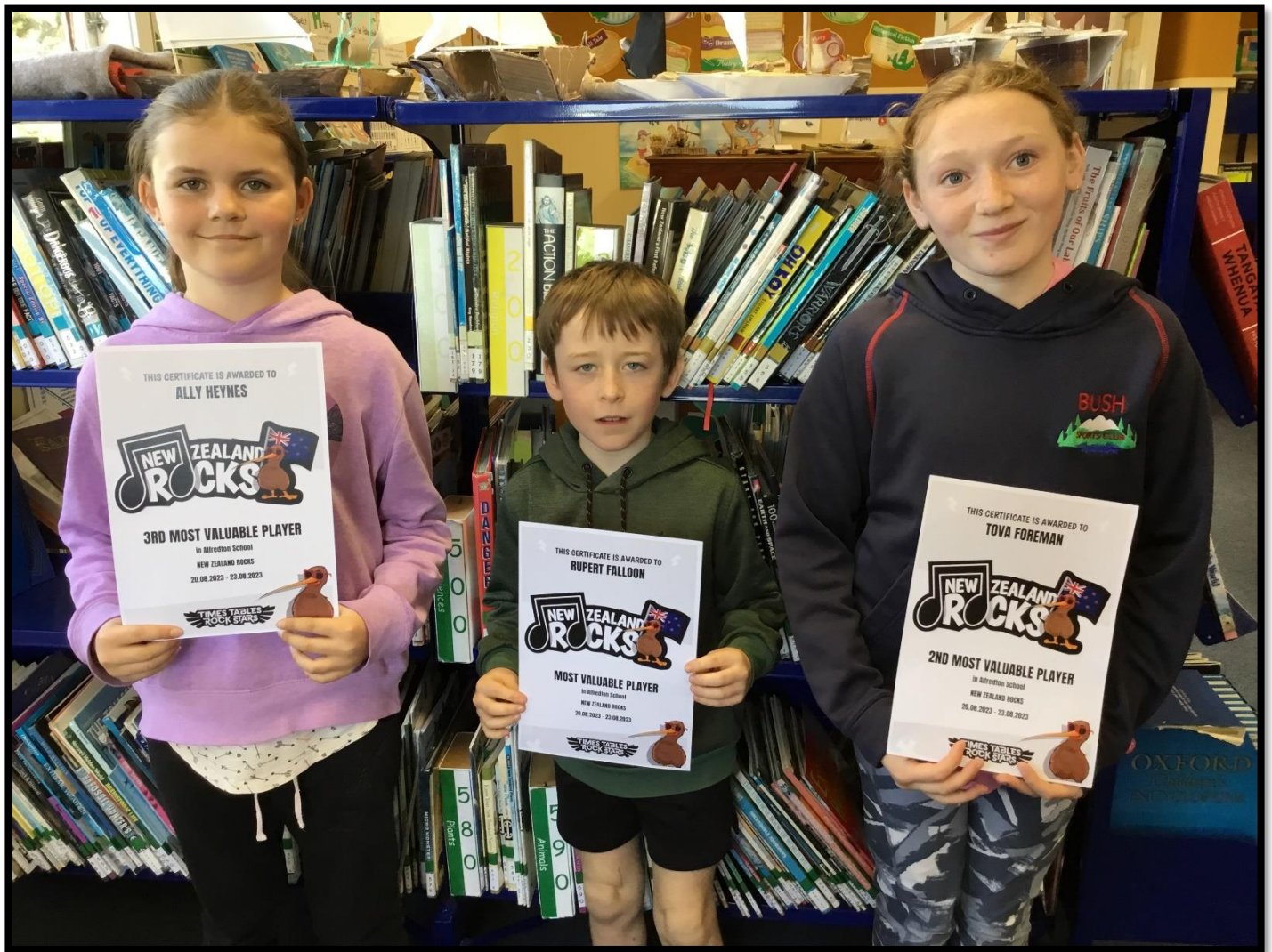


Classroom Awards



Readers of the Week





FROM HUIA CLASSROOM

On Tuesday the 22nd of August, the year 8s went to Pukaha (Mt. Bruce) and did an art/science workshop with a group of Pahiatua School students. We entered the Huia room through the cafe where we were met by Kelly, a staff member who would be teaching us. We first got to know each other through activities and games.

We started off with some general wildlife learning before a break for morning tea. After that, we headed outside for a bushwalk where we would see lots of birds as well as a special visit to the Longfin Eel pond. Some birds we saw included Kaka, Kea, Takahe, North Island Saddleback, and a particularly friendly Kokako, among others. We also made a quick detour to the Kiwi exhibit, where we saw Niwha, the white Kiwi's son, as well as a couple others under the red light.

After that, we made our way back just in time for lunch. Which was at about 12:30. After, we did some learning about an extinct species of frog before finishing the day with some clay modelling. Overall, a very fun day for the first week.

Zephyr

On Tuesday the 29th August, the Year 8's went to Pukaha Mt Bruce. Firstly, Kelly, the person who was teaching us, told us about birds, she showed us a number of stuffed birds and told us a bit about each one.

After that we went for a walk in the bush, we also went and fed the eels and went to the kiwi house. After that we went for a walk inside one of the aviaries with heaps of birds, and we saw the ducks fighting with each other.

After that we went back to the classroom area and did some art.

I made a clay nest of eggs and a clay toadstool that I left at Mt Bruce.

Amy

SPORTS NEWS

Outdoor Hockey

Term 4 Summer Outdoor Hockey.

This will start on the 2nd Tuesday back at school and will run for 8 weeks. (17/10/2023 to 05/12/2023)

Subs \$12.00 per player

Please let the office know by 08th September if your child is interested in playing.

BOT UPDATE

NEXT MEETING DATE: Wednesday 13th September at 3:30pm

ASCA

ASCA

*(Alfredton School and community
association)*

FIREWOOD FUNDRAISER

Sunday 17th September

**Is your woodshed looking empty? Get organized
for next winter and stock up on Macrocarpa
firewood. Proceeds go towards helping Alfredton
School fundraise for next year's school camp.**

**Bring your trailer and we will load your wood.
Pick up only, no deliveries sorry.**

Location - Waimea Farm 13559 Route 52
10am - 1pm

Cost: \$100 per cube (bank deposit or cash on day)

Please register by **Friday 8th September** if you want to purchase wood.

Angela: 021 2537657

Ginny: 027 257316

ASCA

RING, SPLIT, GONE!

FIREWOOD FUNDRAISER

Sunday 10th September

Waimea Farm - 13559 Route 52

9am - 3pm (Weather dependant)

Hamish and Angela Blundell have kindly donated ~~Macrocarpa~~ Firewood (next seasons) for a school fundraise
The wood needs ringing and splitting, and can be taken that day. You come, you help, you load a trailer and have wood for next season!
Cost: \$100 per cube (bank deposit or cash on day)

We need:
Splitters
Chainsaws
Workers

Please register if you would like to purchase wood, can work a chainsaw, provide wood splitters or help on the day.
No dogs, No Children in the work area.
House is available for children, supervision to be arranged.

Angela: 021 2537657
Ginny: 027 2573164

A few beverages will be had at the end of the day! BYO

COMMUNITY NEWS

KIDS ARE FREE on our new Overnight Wildlife Adventure Package these school holidays
From \$270 – save up to \$90

What you get in this package:

An overnight stay in our self-contained cottage inside Ngā Manu Nature Reserve (Theo's Cottage)

And a choice between:-

Kiwi Night Encounter – for 2 adults and up to 2 children (children must be aged 7+)

OR

Native Bird Close Encounter – for 2 adults and up to 2 children (children must be aged 7+)

Additional inclusions:

Have the reserve all to yourself after hours

Do a night time forest walk

Listen to the dusk and dawn bird chorus

Unlimited reserve entry during your stay

Late check out at 11am

To book - call 04 2934131 or email hello@ngamanu.org.nz

For terms and conditions and pricing options please refer to our website
<https://ngamanu.org.nz/overnight-wildlife-package/>

Package accommodates up to four people, 1 and 2 adult options available
Valid from the 23rd Spetember – 8th October 2023

Manawatu River Catchments Collective

Upper Tiraumea Ihuraua Wetlands Workshop

15th September 3pm start

Alfredton Hall

Arrive 3pm Afternoon tea supplied by the MRCC.

Wetlands – The Horizons team will talk about how to recognise a wetland, the benefits of creating a wetland, and steps to identifying sites to establish natural wetlands on your farm with the aim to increase water quality. The session will cover how to design a wetland that will contribute to the natural diversity of native plants, insects and aquatic life in your wetland and a step wise enhancement process.

Facilitated by

- Sian Cass Senior Biodiversity Advisor Community
- Ruth Fleeson Senior Biodiversity Advisor

NB Post workshop refreshments supplied courtesy of the Upper Tiraumea Ihuraua catchment group



Please RSVP by 10th September for catering to

James McKay mckaytekeo@gmail.com

Gwyn Jones: Coordinatoreastmrcc@gmail.com

[Find us on :](#)

